

DETROIT COUNTRY DAY JUNIOR SCHOOL  
*Bloomfield Hills, Michigan*



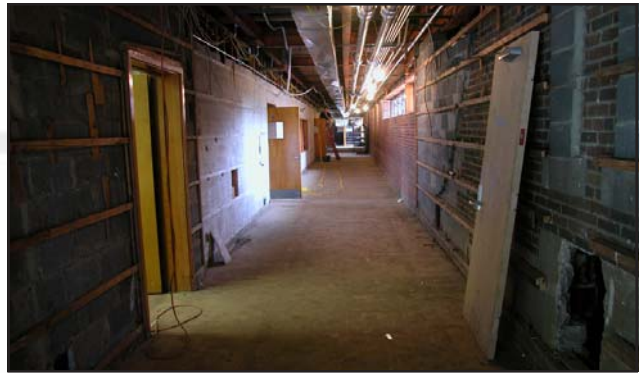
*The challenge presented to TMP Architects and Cunningham-Limp was to completely refresh this aged junior school facility during the summer vacation period. In less than ninety days of demolition and construction the team transformed this 38,000 square foot structure, some portions of which date from the 1920's, into a bright, modern, climate controlled facility.*

*The entire building mechanical system was replaced with efficient heating, air conditioning and electrical systems. The classroom comfort level was further enhanced by replacement of all the windows with insulated glazing material, all new floor coverings and marker boards.*

<b>Facility Type</b>	Redevelopment -- School
<b>Client</b>	Detroit Country Day School
<b>Size</b>	38,000 s.f.

# DETROIT COUNTRY DAY JUNIOR SCHOOL

*Bloomfield Hills, Michigan*



The challenge presented to TMP Architects and Cunningham-Limp was to completely refresh this aged junior school facility during the summer vacation period. In less than ninety days of demolition and construction the team transformed this 38,000 square foot structure, some portions of which date from the 1920's, into a bright, modern, climate controlled facility.

The entire building mechanical system was replaced with efficient heating, air conditioning and electrical systems. The classroom comfort level was further enhanced by replacement of all the windows with insulated glazing material, all new floor coverings and marker boards.

<b>Facility Type</b>	Redevelopment -- School
<b>Client</b>	Detroit Country Day School
<b>Size</b>	38,000 s.f.